

# FIXTURE GUIDE



# FREESTANDING A-FRAME GONDOLA

## PROGRAM DETAILS

- Order investment level of \$3000–\$4000 (fixtures included with order)
- Cost of fixture: \$500

## FIXTURE SPECIFICATIONS

Freestanding display: 65.75"W x 63"H x 24"D

**CAPACITY**  
**175–200**  
**UNITS**



## ASSORTMENT VERSATILITY



## MERCHANDISING

**CAPACITY RANGE 175–200**

CATEGORY	SKU SELECTIONS
TEES	
MIDLAYERS/JACKETS	
PANTS	

# 4-WAY

## PROGRAM DETAILS

- Order investment level of \$900–\$1,200 (fixtures included with order)
- Cost of fixture: \$225

## FIXTURE SPECIFICATIONS

**Base:** 66"H x 44"W

**Base sign with topper:** 83"H

**Includes:**

- (2) waterfalls
- (2) faceouts



**CAPACITY**  
**48-64**  
**UNITS**

## HAT RACK TOPPER OPTION



## ASSORTMENT VERSATILITY



## MERCHANDISING

**CAPACITY RANGE 48-64**

CATEGORY	SKU SELECTIONS
TEES	
MIDLAYERS	
OUTERWEAR	



## NESTING TABLES (3 available sizes)

### PROGRAM DETAILS

#### • Order investment levels:

- Large: \$2,500 (large fixture included)
- Medium: \$2,000 (medium fixture included)
- Small: \$1,500 (medium fixture included)

#### • Cost of fixture:

- Large: \$550
- Medium: \$450
- Small: \$350

### FIXTURE SPECIFICATIONS

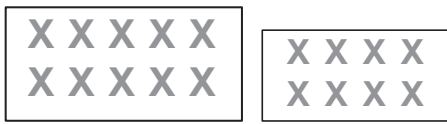
**LARGE SET: Table:** 60"L x 34"D x 35"H | **Nester:** 48"L x 32"D x 21.5"H

**MEDIUM SET: Table:** 48"L x 34"D x 35"H | **Nester:** 36"L x 32"D x 21.5"H

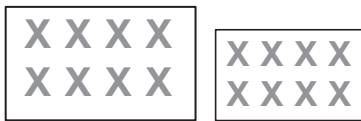
**SMALL SET: Table:** 36"L x 34"D x 35"H | **Nester:** 24"L x 32"D x 21.5"H

### TABLE CAPACITY BY SIZE

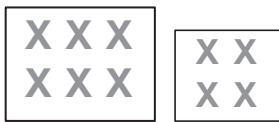
LARGE: 180-200



MEDIUM: 140-160



SMALL: 100-120



### ASSORTMENT VERSATILITY



FOLDED

FOLDED



FOLDED

FOLDED

## MERCHANDISING

### CATEGORY SKU SELECTIONS

#### LARGE SET

TEES

MIDLAYERS

PANTS

#### MEDIUM SET

TEES

MIDLAYERS

PANTS

#### SMALL SET

TEES

MIDLAYERS

PANTS

# 8FT WALL SECTION

## PROGRAM DETAILS

- Order investment level of \$9,000–\$10,000 (fixtures included with order)
- Cost of fixtures: \$2,000

## FIXTURE SPECIFICATIONS

**Size:** 102"H x 48"W

## ACCESSORIES

**Graphic frames:** (2) @ 24"

**Shelves:** (6) @ 24"

**Hang bar:** (1) @ 24"x1.5"

**Hang bar:** (1) @ 24"x12"

**Faceout:** (1) @ 11"

## MERCHANDISING CAPACITY

**24" shelf:**

- 8–18 folded t-shirts
- 4–8 folded sweatshirts
- 4–8 folded pants
- 6–8 hats

**11" faceout:** 6–12 shirts

**24" hang bar:** 14–24 shirts

**SHOP  
CAPACITY**

**42–78**

**UNITS**

**WALL UNIT:  
SINGLE-SIDED  
MERCHANDISING**



# Slatwall Shoe Wall

## PROGRAM DETAILS

- Order investment level of \$2,000–
- Cost of fixtures: \$100

## FIXTURE SPECIFICATIONS

**Size:** 20"W X 72"H X 6.607"D

## MERCHANDISING CAPACITY

### 24" shelf:

- 8–18 folded t-shirts
- 4–8 folded sweatshirts
- 4–8 folded pants
- 6–8 hats

**11" faceout:** 6–12 shirts

**24" hang bar:** 14–24 shirts

**Footwear  
CAPACITY**

**6-20  
UNITS**

**FOOTWEAR WALL UNIT:  
SINGLE-SIDED  
MERCHANDISING**



# 8FT FREESTANDING UNIT

## PROGRAM DETAILS

- Order investment level of \$9,000–\$10,000 (fixtures included with order)
- Cost of fixtures: \$2,000

## FIXTURE SPECIFICATIONS

**Size:** 102"H x 48"W

## ACCESSORIES

**Graphic frames:** (2) @ 24"

**Shelves:** (6) @ 24"

**Hang bar:** (1) @ 24"x1.5"

**Hang bar:** (1) @ 24"x12"

**Faceout:** (1) @ 11"

## MERCHANDISING CAPACITY

**24" shelf:**

- 8–18 folded t-shirts
- 4–8 folded sweatshirts
- 4–8 folded pants
- 6–8 hats

**11" faceout:** 6–12 shirts

**24" hang bar:** 14–24 shirts

**SHOP  
CAPACITY**  
**42–78**  
UNITS



## 20 SKU FOOTWEAR WALL (4')

### PROGRAM DETAILS

- Order investment level of \$30,000–\$32,000 (fixtures included with order)
- Cost of fixtures: \$6,500

### FIXTURE SPECIFICATIONS

**Wall unit:** 96"H x 48"W





# 40 SKU FOOTWEAR WALL (8')

## PROGRAM DETAILS

- Order investment level of \$30,000–\$32,000 (fixtures included with order)
- Cost of fixtures: \$6,500

## FIXTURE SPECIFICATIONS

**Wall unit:** 96"H x 96"W



# 8' FREESTANDING APPAREL AND FOOTWEAR WALL

## PROGRAM DETAILS

- Order investment level of \$30,000–\$32,000 (fixtures included with order)
- Cost of fixtures: \$6,500

## FIXTURE SPECIFICATIONS

**Wall unit:** 96"H x 96"W



# 10X12 CROSS PROMOTION SHOP (120 SQ FT)

## PROGRAM DETAILS

- Order investment level of \$14,000–\$16,000 (fixtures included with order)
- Cost of fixtures: \$2,000

## FIXTURE SPECIFICATIONS

Wall unit: 3 @ 96"H x 48"W



# 12FT WALL WITH 4FT GRAPHIC EXTENSION

## PROGRAM DETAILS

- Order investment level of \$30,000–\$32,000 (fixtures included with order)
- Cost of fixtures: \$6,500

## FIXTURE SPECIFICATIONS

**Wall unit:** 96"H x 96"W



# 10X10 FREESTANDING SHOP (OPTION A, 100 SQ FT)

## PROGRAM DETAILS

- Order Investment level of \$15,000–\$17,000 (fixtures included with order)
- Cost of fixtures: \$3,000

## FIXTURE SPECIFICATIONS

**Freestanding display:** 2 @ 96"H x 48"W

**Large nesting table set:** Table: 60"L x 34"D x 35"H | Nester: 48"L x 32"D x 21.5"H

**A-frame gondola:** 65.75"W x 63"H x 24"D

## FLOOR SPACE SHOWN

**Wood floor:** 10'x10'

**Carpeted area:** 13'x13'

*Flooring not included*

**SHOP  
CAPACITY**  
**750–850**  
UNITS



**WALL UNIT:**  
**DOUBLE-SIDED**  
**MERCHANDISING**



# 10X20 WALL UNIT SHOP

## PROGRAM DETAILS

- Order investment level of \$14,000–\$16,000 (fixtures included with order)
- Cost of fixtures: \$5,000

## FIXTURE SPECIFICATIONS

**Wall unit:** 4 @ 96"H x 48"W

**A-frame gondola:** 65.75"W x 63"H x 24"D

**4-Way:** 2 @ 66"H x 44"W (83" with topper)

## FLOOR SPACE SHOWN

**Wood floor:** 20'x10'

**Back wall:** 20'W x 10'H

*Flooring not included*

**SHOP  
CAPACITY**  
**700–800**  
UNITS

**WALL UNIT:**  
**SINGLE-SIDED**  
**MERCHANDISING**



# 20X20 SHOP (OPTION A - 400 SQ FT)

## PROGRAM DETAILS

- Order investment level of \$30,000–\$34,000 (fixtures included with order)
- Cost of fixtures: \$7,000

## FIXTURE SPECIFICATIONS

**Wall unit:** 4 @ 96"H x 48"W

**Freestanding display:** 4 @ 96"H x 48"W

**Large nesting table set:** Table: 60"L x 34"D x 35"H | Nester: 48"L x 32"D x 21.5"H

**A-frame gondola:** 65.75"W x 63"H x 24"D

## FLOOR SPACE SHOWN

**Wood floor:** 20'x20'

**Carpeted area:** 21'x23'

*Flooring not included*

**SHOP  
CAPACITY**  
**1,500–1,700**  
UNITS



## 20X20 SHOP (OPTION B - 400 SQ FT)

### PROGRAM DETAILS

- Order investment level of \$30,000–\$32,000 (fixtures included with order)
- Cost of fixtures: \$6,500

### FIXTURE SPECIFICATIONS

**Wall unit:** 4 @ 96"H x 48"W

**Freestanding display:** 4 @ 96"H x 48"W

**Large nesting table set:** Table: 60"L x 34"D x 35"H | Nester: 48"L x 32"D x 21.5"H

**4-Way:** 66"H x 44"W (83" with topper)

### FLOOR SPACE SHOWN

**Wood floor:** 20'x20'

**Carpeted area:** 21'x23'

*Flooring not included*

**SHOP  
CAPACITY**  
**1,500–1,600**  
UNITS





# HAT TOWER/SLATWALL HAT RACK

## HAT TOWER

### PROGRAM DETAILS

- 60" freestanding hat tower
- Includes 14 hat tray shelves (8 hat capacity per tray, 56 hats capacity one side, 112 hats total for the unit)
- Casters for additional rolling capability
- Fixture ships separate from order

### FIXTURE SPECIFICATIONS

#### Fixture dimensions:

14.75"W x 25.92"D X 60" T (68" with header)

Header height: 8"



## SLATWALL HAT RACK

### PROGRAM DETAILS

- Slatwall, gridwall and peg board adaptable
- Fits 6 nested units
- Fixture ships separate from order
- SKU: 289-CRM
- Color: Black

### FIXTURE SPECIFICATIONS

Fixture dimensions: 8.5"W x 10.5"D



# HAT DISPLAYS

## PROGRAM DETAILS

- Order investment level of \$504
- Fixture included with order
- 96 pieces per stand

## FIXTURE SPECIFICATIONS

**Fixture dimensions:** 17"W x 14"D X 60" T

**Header height:** 12"

**Note:** Beanies and watchcaps are merchandised 12 deep on display

BEANIE



## PROGRAM DETAILS

- Order investment level of \$532 for embroidered trucker cap
- Order investment level of \$700 for performance baseball cap
- Fixture included with order
- 56 pieces per stand

## FIXTURE SPECIFICATIONS

**Fixture dimensions:** 17"W x 14"D X 60" T

**Header height:** 12"

**Note:** Hats are merchandised 7 deep on display

BASEBALL CAP



# FREESTANDING TOWER W/3-HOOK ADD ON

**Fixture dimensions:** 17"W x 14"D X 60" T

**Cost of fixture:** \$500

**Note:** fits slides, baselayers, hats and insoles

## CAPACITY

**Slides:** 3 slides per hook/9 across

**Thermal apparel boxes:** 2 per hook/6 across

**Hats:** 6 per hook/18 across

**Insoles:** 6 insoles on a hook/18 across

**Knee pads:** 6 insoles on a hook/18 across



3-HOOK SLATWALL ADAPTER (AVAILABLE SEPARATELY)



BASELAYERS



HATS



SLIDES



INSOLES

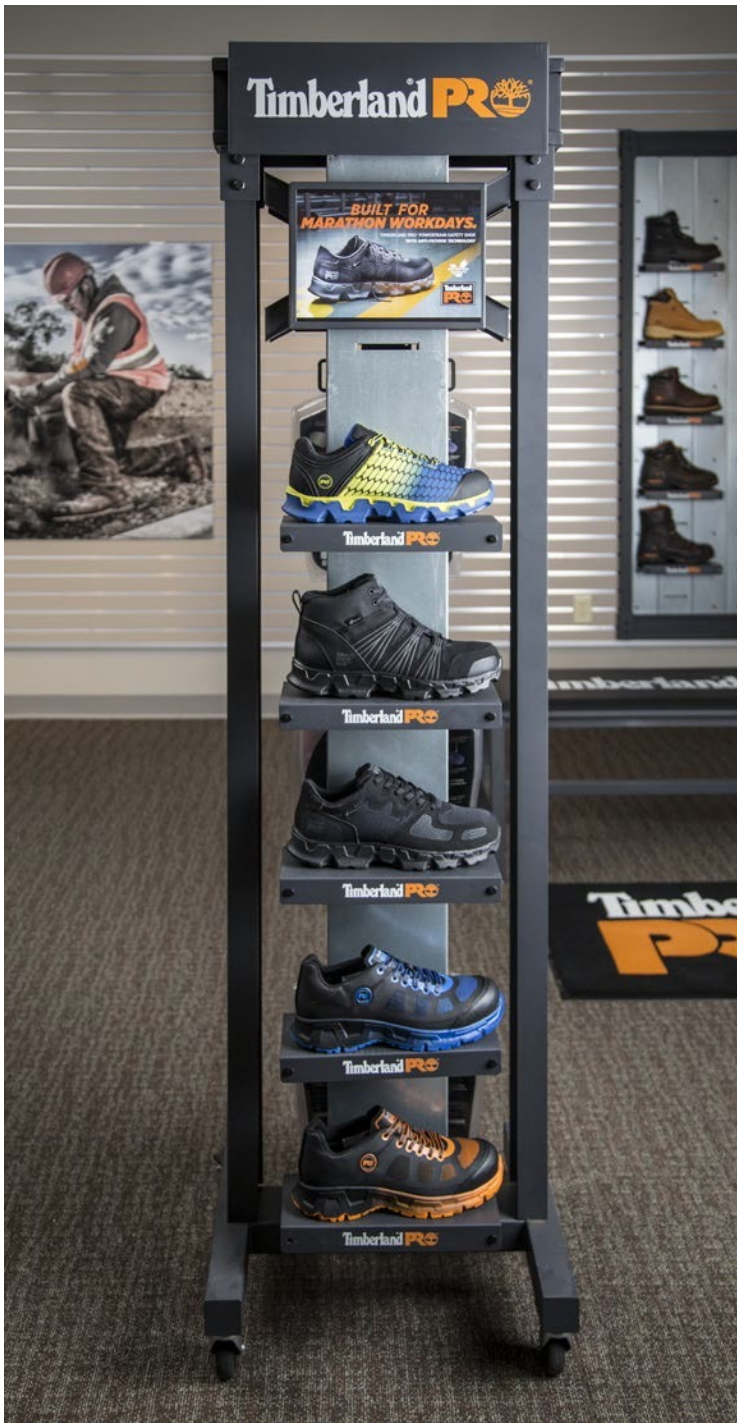


# SHOE TOWER, BENCH AND FLOOR MAT

## SHOE TOWER

- SKU: FXP66.14
- includes 10 Shoe Shelves, four graphics and insole hangers

**Fixture dimensions:** 19" W x 19" D x 76" H



## PRO BENCH

- SKU: FXGINT405
- Size: 24"L x 20"W x 19"H

## PRO PLUSH FLOOR MAT

- SKU: FXP16.16
- Size: 2' x 3'



## LARGE PRO BENCH

- SKU: FXGINT404
- Size: 48"L x 20" W x 20"H (40 lbs)

## LARGE PRO FLOOR MAT

- SKU: FXP83
- Size: 4' x 6'



# FEATURED SHOPS

**10X10 FREESTANDING SHOP**  
(OPTION A, 100 SQ FT)



**10X10 FREESTANDING SHOP**  
(OPTION B, 100 SQ FT)



**10X20 WALL UNIT SHOP**

**20X20 SHOP**  
(OPTION A, 400 SQ FT)



**20X20 SHOP**  
(OPTION B, 400 SQ FT)



**10X20 CROSS PROMOTION SHOP**



# ALL FIXTURES

**4 WAY**



**NESTING TABLES**



**A-FRAME GONDOLA**



**8FT WALL SYSTEM**



**8FT FREESTANDING**



**20 SKU FOOTWEAR WALL**



**20 SKU FOOTWEAR WALL**



**8FT FREESTANDING DIS...**  
8FTFREESTANDING

